

TSUS MELL Initiative's ACCIÓN Plan

Active Curriculum & Content:
Involving, Orchestrating,
Networking



**TEXAS
STATE**
UNIVERSITY
SAN MARCOS

Presenter: Joyce Fischer

¿Background?

TSUS MELL

Texas State University System
Mathematics for English
Language Learners

More Background

Topics to Cover

- Why do we need the model?
- Abstract description of the model
- On whose research is the model based?
- What is the ACCIÓN model?
- When will it be implemented?



Why do we need the model?

- TIMSS International Mathematics Report
- NCES 2003 Status and Trends in the Education of Hispanics
- 2003 RAND Study Panel Report
- A TEA observation of TAKS data related to math and ELLs



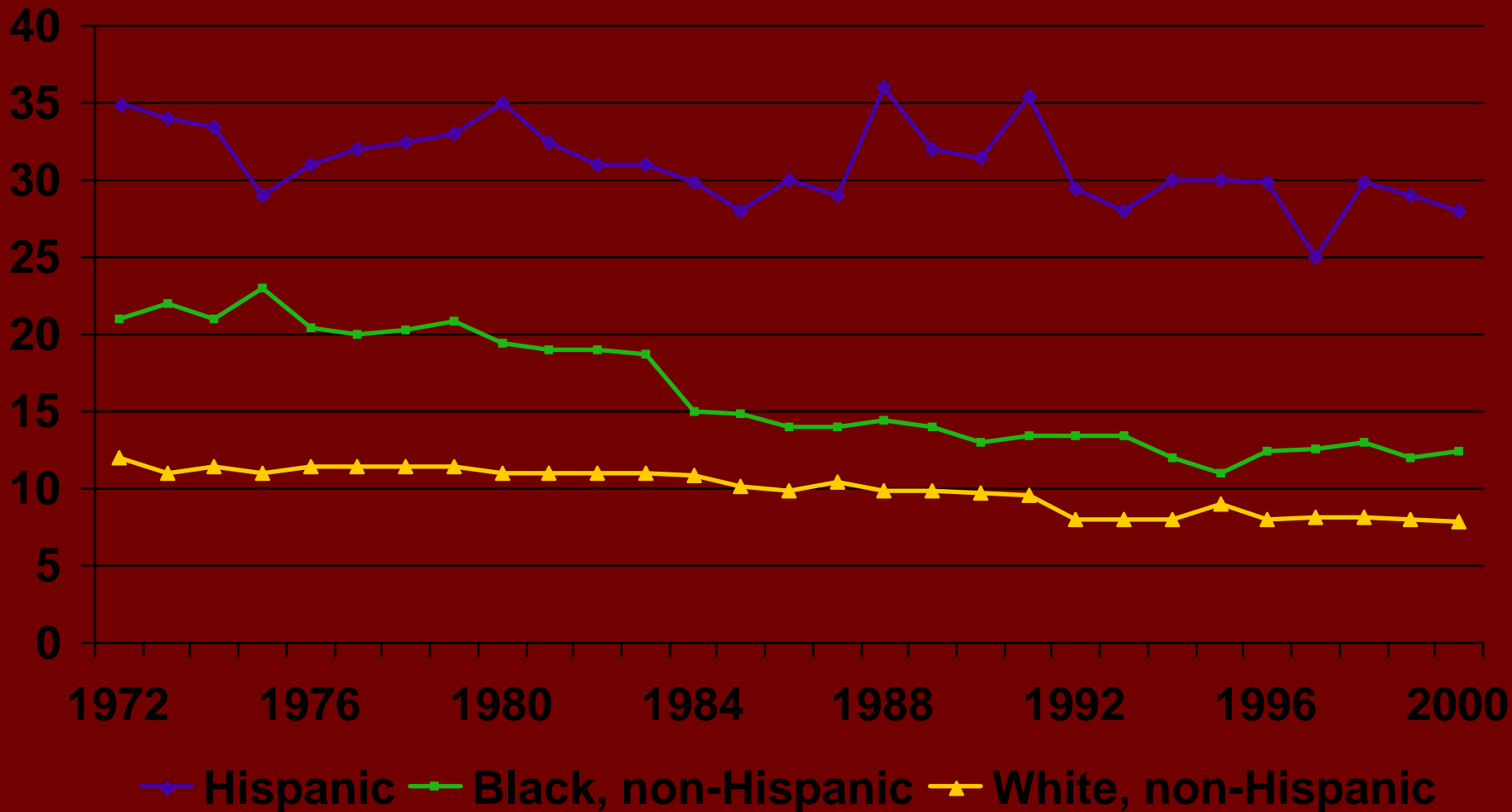
TIMSS

- Singapore's scores (643, 604, 605)
- USA's scores (500, 502, 504)
- U. of Washington Report

The most striking difference between the educational systems of both countries, however, is in the governmental support of education. For example, the [Singapore] government encourages every teacher to attend at least 100 hours of training each year...



Percent of 16- to 24-year-olds who were high school dropouts, by race/ethnicity: 1972-2000



Topics Covered

- Why do we need the model?
- Abstract description of the model
- On whose research is the model based?
- What is the ACCIÓN model?
- When will it be implemented?



What is the ACCIÓN Plan?

It is a professional development model (PDM) designed to train teachers on how to use proven strategies to effect mathematics success for English Language Learners.



Topics Covered

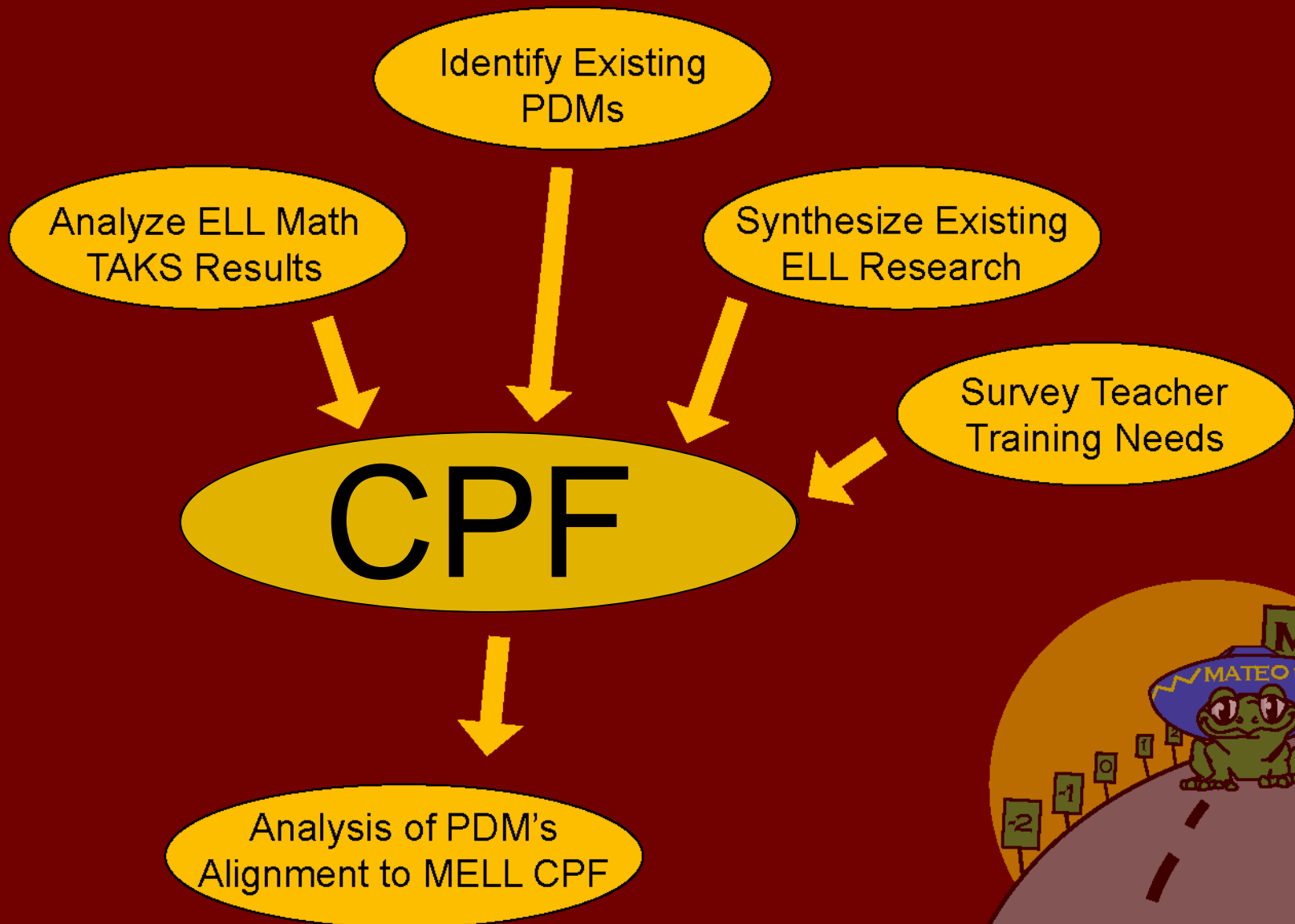
- Why do we need the model?
- Abstract description of the model
- On whose research is the model based?
- What is the ACCIÓN model?
- When will it be implemented?



¿Research Basis?

The Year One TSUS MELL Products





Topics Covered

- Why do we need the model?
- Abstract description of the model
- On whose research is the model based?
- What is the ACCIÓN model?
- When will it be implemented?



Sections of TSUS MELL CPF

1. Learning Atmosphere &
Physical Environment
2. Instructional Practices
3. Mathematics Content & Curriculum
4. Language Practices
5. Family & Community Involvement
6. Assessment of Student Learning

Models Analyzed

- Cognitively Guided I.
- Connect Math Project
- Everyday Math
- Family Math
- Figure This!
- Investigations
- MATHCOUNTS
- Mathworks
- Navigations
- Sharon Wells Math
- Sheltered Instruction
- Textteams

Models Analyzed

- Cognitively Guided I.
- Connect Math Project
- Everyday Math
- Family Math
- Figure This!
- Investigations
- MATHCOUNTS
- [Mathworks](#)
- Navigations
- Sharon Wells Math
- Sheltered Instruction
- Textteams

What is the ACCIÓN Plan?

- Based on the Mathworks PDM
- Modified to:
 - Align even more closely to TSUS MELL Classroom Practices Framework
 - Expand the scope of a MELL curriculum
 - Address more details specifically for ELLs



The Mathworks PD Model

- Its philosophy
- An overview of the model
- Its alignment with the TSUS MELL CPF
- Its unique strengths
- How it will be modified to address some shortcomings



Mathworks' Philosophy

- All students can learn high level math
- The language of algebra is important
- Deep understanding comes from inquiry-based approaches
- Real-world examples motivate exploration



The Mathworks PD Model

- ☑ Its philosophy
- ☐ An overview of the model
- ☐ Its alignment with the TSUS MELL CPF
- ☐ Its unique strengths
- ☐ How it will be modified to address some shortcomings



An Overview of Mathworks

- Origination, Administration & Induction
- Implementation
 - Junior Summer Math Camp
 - Math Inquiry Groups
- Honors Summer Math Camp



The Mathworks PD Model

- ☑ Its philosophy
- ☑ An overview of the model
- ☐ Its alignment with the TSUS MELL CPF
- ☐ Its unique strengths
- ☐ How it will be modified to address some shortcomings



Mathworks' Alignment to CPF

Highlights of the Analysis

1. Learning Atmosphere &
Physical Environment
2. Instructional Practices
3. Math Content & Curriculum
4. Language Practices
5. Family & Community
Involvement
6. Assessment of Learning

Particular Strengths



The Mathworks PD Model

- ☑ Its philosophy
- ☑ An overview of the model
- ☑ Its alignment with the TSUS MELL CPF
- ☑ Its unique strengths
- ☐ How it will be modified to address some shortcomings



Modifying Mathworks

- Expand the scope of the curriculum
- Develop multilingual resources and dual language implementation
- Teacher certification
- A complete teachers' guide



The Mathworks PD Model

- ✓ Its philosophy
- ✓ An overview of the model
- ✓ Its alignment with the TSUS MELL CPF
- ✓ Its unique strengths
- ✓ How it will be modified to address some shortcomings



Topics Covered

- Why do we need the model?
- Abstract description of the model
- On whose research is the model based?
- What is the ACCIÓN model?
- When will it be implemented?



When will it be implemented?

- Research, testing and pilots begin again in August
- TEA Review begins Fall 2005
- Tweaking in Spring 2006
- Workshops begin

Summer 2006



Topics Covered

- ✓ Why do we need the model?
- ✓ Abstract description of the model
- ✓ On whose research is the model based?
- ✓ What is the ACCIÓN model?
- ✓ When will it be implemented?



Further Information

- TSUS MELL website: www.tsusmell.org
- Texas State Project Team Leader
 - Dr. Joyce Fischer
 - Email: jf10@txstate.edu
 - Phone: (512)245-8023

